



**Stainless steel tanks manufacturing leader**

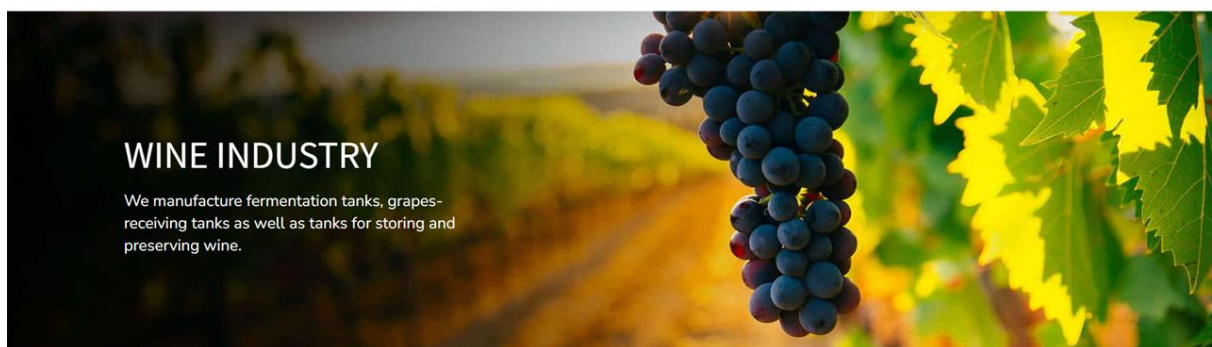
Tanks of any capacity and size

## COMPANY PROFILE



## Solution for every sector

We manufacture tanks and small to large-sized installations for various industrial sectors, invariably paying strict attention to materials and workmanship.



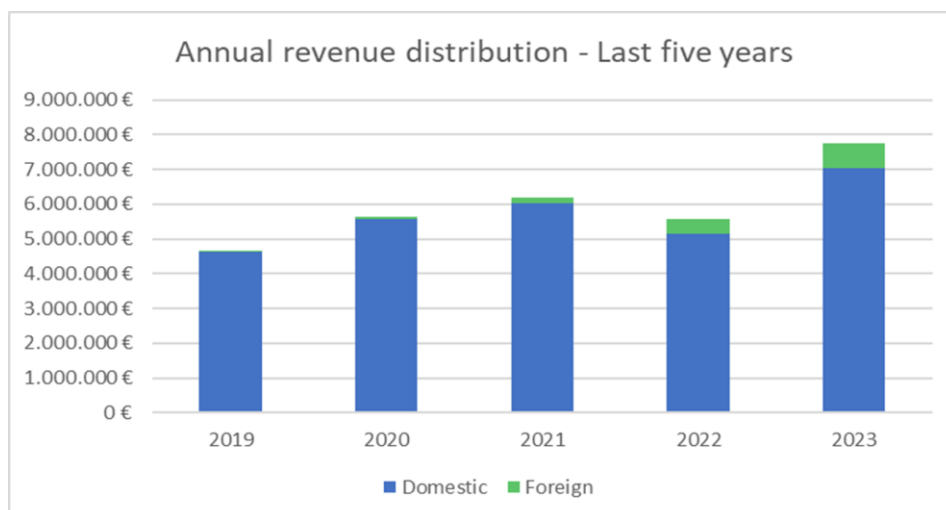
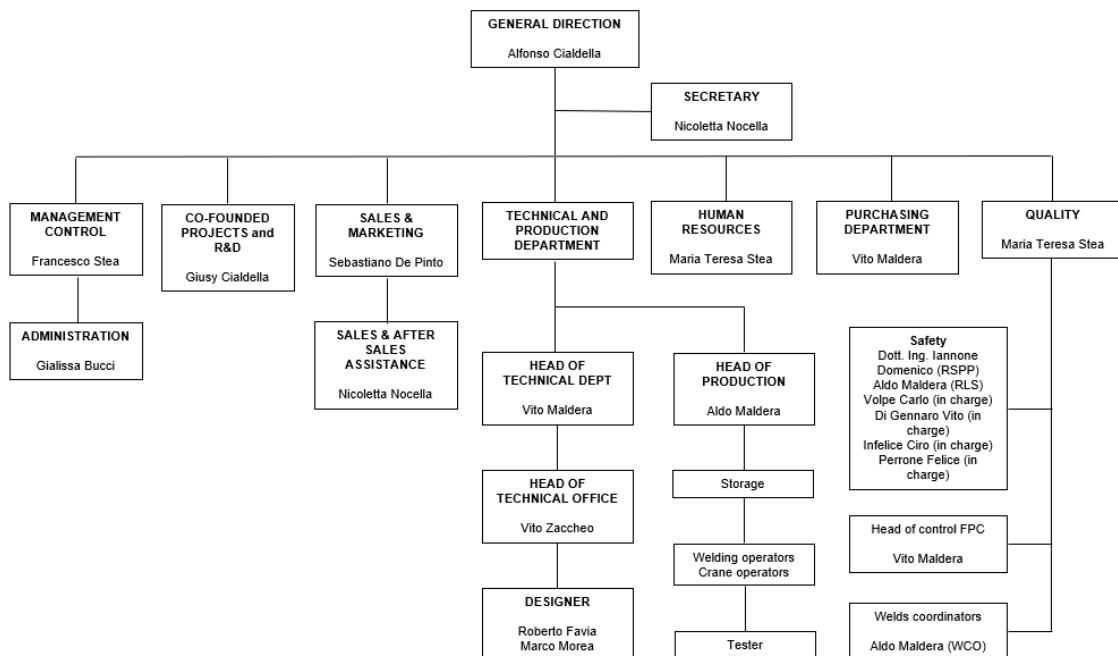
### WINE INDUSTRY

We manufacture fermentation tanks, grapes-receiving tanks as well as tanks for storing and preserving wine.

## THE COMPANY

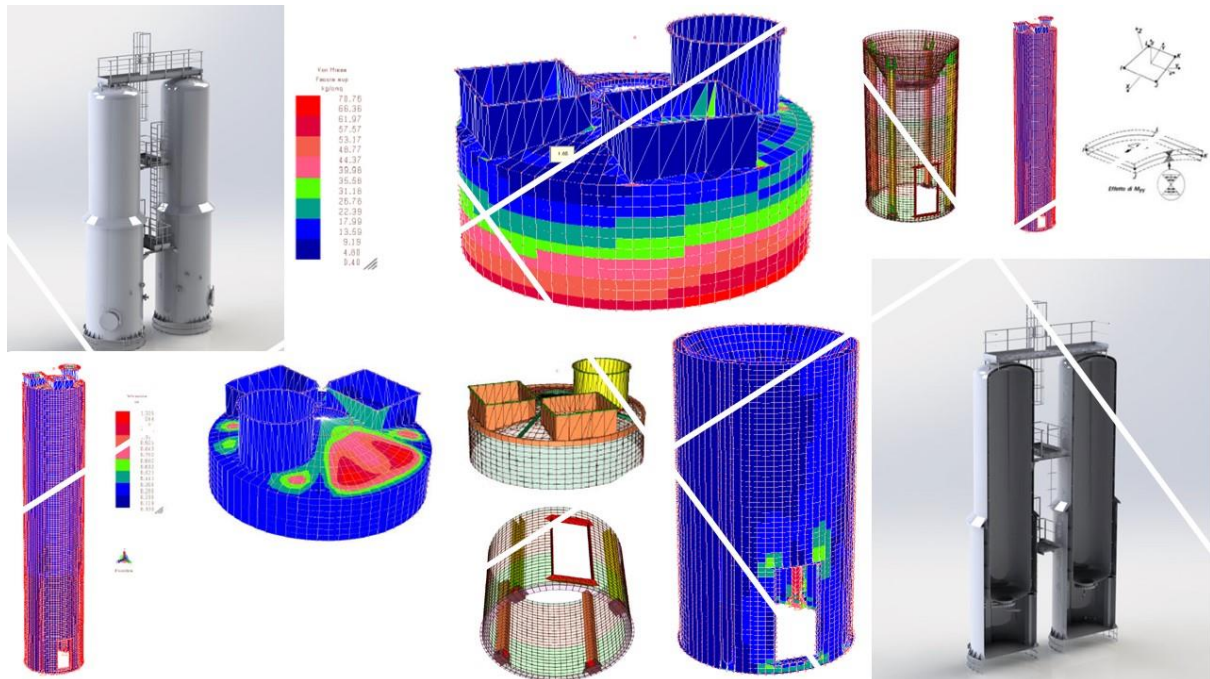
Steel Tech srl is a PME (Small Medium Enterprise) located in Corato, in the Apulia region, specialized in more than fifty years in the domain of the transformation of stainless steel into more sectors as agri-food, wine, chemical-pharmaceutical and renewable energies.

**SUPPORT** We are always at customers disposal to satisfy all their needs and help them to create tanks and silos with the best performances at competitive price without renounce to material quality, support from our technical department, welding quality and specially the tank realisation corresponds to the customer expectations within the delivery time agreed.



## TECHNICAL COMPETENCES

Great know-how of our designers in AutoCAD software to create 2D files and SolidWorks for 3D design and finite element analysis (FEM). In addition, thanks to our calculation engineer, Steel Tech is able to provide customers with a complete technical file as well as structural calculation report carried out directly by us.



**PRODUCTION** Two workshops of 2,000 m<sup>2</sup> and an outdoor area of 6,000 m<sup>2</sup>: production is carried out with our team of certified and experienced welders and all our equipment such as several shears, different roll forming, decoiler, presses, different machines, manual and automatic welding equipment.

**ASSEMBLY AND INSTALLATION** Steel Tech ensures also the complete production of tanks in our workshops ready to be shipped as well as the assembly and external installations directly to the customer site. The manufacturing of semi-finished parts is done in our factory, then the tanks and silos are finalized on site, thanks to our team of welders, our equipment and thanks to loyal local partners for equipment rental, if necessary.

**CERTIFICATION** Steel Tech is certified ISO 9001, UNI EN ISO 3834, EN 1090 by the DEKRA quality office. Our products are always accompanied by all the documentation requested by the customer, carefully prepared by the quality office, specifically the material certificates, the technical file with the weld test certificates, the welding book and finally the CE marking. Steel Tech is also in collaboration with several Certifying entities regarding the QMOS of pressure vessels.

## ACTIVITY SECTOR

### *Agri-food*

Silos for the storage of cereals, flour, coffee, but also for the storage of liquids (water, oil, beer, etc.). Modular and upgradeable silos, adapted to the industrial storage capacity of any bulk product, powder, seeds, etc.



### *Wine industry*

Tanks of all sizes for fermenting grapes, storing and preserving wines for internal and external use. Certified production tanks to guarantee the highest product quality over time.

### *Environmental Bioenergy :*

Pour les activités de transformation des déchets, le traitement des liquides industriels et des eaux usées. Et encore, cuves pour contenir eau, boues industrielles, lixiviats de décharge, etc...

Compliance with the regulations in force is fundamental in this field: that's what Steel Tech guarantees. For waste processing activities, the treatment of industrial liquids and waste water. Tanks to contain water, industrial sludge, landfill leachate, etc...







***Chemical - Pharmaceutical :***

Steel Tech manufactures tanks for the storage of granules, all sizes and specific weights, as well as for fuel storage.

***Renewable energy:***

Tanks for anaerobic digestion, for the production of biogas derived from biomass processes, organic materials that can be used as fuels and/or combustibles.





## STORAGE TANKS FOR WINE SECTOR

## STORAGE TANK FOR WINE SECTOR

**REFERENCE** Our presence on the winery industry is a reference for the producers on our territory because since 1972 we produce tanks for this sector. Our know-how is growth within the years, that allow to offer you optimal solutions for winemakers, wine harvesting bins, tanks...

**STORAGE** Preserving wine at its best is an art. That's why Steel Tech guarantees the quality of its tanks to ensure the highest standards of hygiene and food safety.

**DESIGN AND CUSTOMIZATION** We produce tanks designed following the customers exigences by us providing our know-ledge about materials in according with the different processes of winemaking. Mastering these phases of wine production is fundamental for the quality of the wine stored and to the ultimate success of the winery's facilities.

**OUR TANKS MAY HAVE DIFFERENT MATERIALS FOR PARTS IN CONTACT WITH THE PRODUCT AND PARTS NOT IN CONTACT WITH THE PRODUCT.**

### Material

AISI 316L (1.4404) / AISI 304L (1.4307) / AISI 316 (1.4401)
AISI 304 (1.4301)
DUPLEX & SUPER DUPLEX

### Tanks type

VERTICAL / HORIZONTAL / SILOS
WITH or WITHOUT HEATING / DOUBLE WALL
OPTION TANK CUVES DEMONTABLES AND WELDED ON SITE
NEP TANK MONOBLOCK COMPARTIMENTEES OR NOT

### Dimensions

Capacity	from 10 to 200 m <sup>3</sup>
External diameter	from 1.000 to 5.000 mm

### Thickness

Domes and bottoms	from 1,5 to 8 mm
Ferrules / sheets	from 2 to 10 mm
Insulating Sleeve	from 2 mm

### Finishing & weldings

External / internal finishing	2B, BA, 1D
Internal welding	Polishing, brushing
Soudures externes	Visible, brushed, stripped

### Support type

SKIRT
FIXED FEET OR WITH ADJUSTABLE PLATES
ANCHORING KIT FOR LOAD-BEARING STRUCTURE
FIXED TO CONCRETE SLAB, CRADLES

### Equipment

Type	OPTIONS
Manhole	Various diameters and openings
Stings	Clamp/ DIN/SMS
Event	With or without insect grille
Wash ball	Removable, fixed
Piping	Various pipe connections
Load cells	Weight sensors
Lifting lugs	Numbered according to weight
Dome railings	Various railing sizes, with or without connecting walkways
Ladder	Cranked, with or without resting level, skirting and handrail
Walkways	Connecting gangways for several tanks
Shakers	Anchors, propellers, turbines, etc. Depending on product

### Thermal exchange & heating sys

On ferrules, on ferrules and fond, unique on bottom	
Thermal exchange	Double wall, half-pipe
Insulating Sleeve	Stainless steel, aluminium, riveted welded

## CONTACT



Eng. Sebastiano De Pinto  
*Sales director*

✉ sales@steeltechitalia.com

📱 +39 393 9025641

### Steel Tech S.r.l.

I - 70033 Corato, BA - Italie  
Via Vecchia Molfetta, 14

☎ +39 080 8721785

🌐 [www.steeltechitalia.com](http://www.steeltechitalia.com)

✉ [info@steeltechitalia.com](mailto:info@steeltechitalia.com)

